

*BG Fuel Systems  
Dry Break Fuel Filter  
PN # 170055*



## INSTALLATION AND SERVICE INSTRUCTIONS

The BG Fuel Systems Dry Break Fuel Filter is designed to be used inline in the fuel system. It is designed to be installed in front of (before) or behind (after) the fuel pump. (It is highly recommended to always use a filter before any fuel pump.)

This filter has flexibility in the installation. The fuel inlet can be plumbed directly inline or has the option of entering perpendicular to the filter housing. It is compatible with all fuels, including racing gas and methanol.

Before installing the BG Fuel Systems Dry Break Fuel Filter, **PLEASE READ THESE INSTRUCTIONS THOROUGHLY.** If you have any questions please contact our technical department at (706) 864-8544.

### INCLUDED IN THIS BOX

In this box you will find:

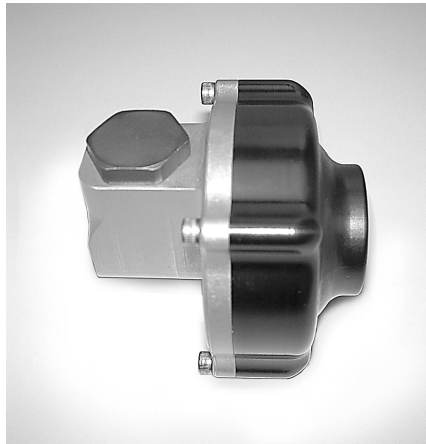
- 1- BG Fuel Systems Dry Break Fuel Filter
- 1 - Instruction Manual

### INSTALLATION

The inlet and outlet fittings on the BG Fuel Systems Dry Break Fuel Filter use a -10AN O-ring fitting. You will need to purchase the appropriate fittings to install the filter into your application. The following fittings should be available through any Barry Grant distributor:

P/N 140014	-8AN X -10AN O-ring
P/N 140012	-10AN X -10AN O-ring
P/N 140025	-12AN X -10AN O-ring

Once you have selected the proper fittings to install the filter into the fuel system, install the fittings into the filter. Since O-rings seal the fitting into and out



of the filter, and they are AN-style fittings, no thread sealer is needed.

The “silver” end of the filter with both the horizontal and vertical fittings is the **inlet** side of the filter. The inlet can be plumbed straight into the filter or if space considerations require, remove the plug that comes installed on the inlet side to plumb the filter inlet at 90 degrees to the centerline of the filter (**NOTE:** If a

90 degree inlet is chosen, use the plug close the other inlet port). Using either inlet will not affect the fuel flow through the filter. The filter can be mounted directly to the fuel cell, fuel pump or free standing depending on what works best for the situation.

### SERVICE

Inspection and replacement of the filter element is very simple. Removing the four (4) 9/64" Allen headed screws on the inlet side gains access to the filter element itself. The inlet side of the filter features a “dry break”. This allows the filter to be taken apart for inspection and service with minimal fuel spillage, since the dry break valve closes, shutting fuel flow off from the fuel cell. Replacement filter element and O-ring kits can be purchased through BG Fuel System dealers; specify BG P/N 171049.

**NOTE: AS WITH ANY OTHER FUEL SYSTEM COMPONENTS, INSPECT ALL FITTINGS AND CONNECTIONS PRIOR TO USE TO MAKE SURE THEY ARE TIGHT AND ARE NOT LEAKING. YOUR SAFETY DEPENDS ON IT!!!**

**For further questions, please contact our technical department at (706) 864-8544.**

1450 McDonald Rd., Dahlonega, Georgia 30533